

## Technical competency

The PSI value analysis has been undertaken by fully accredited BRE competent persons to EN 10211: 2007 and BR497. Our Xtratherm Technical team are qualified under the BBA calculation competency scheme CS/1006 to produce thermal and condensation calculations.



**Certificate No**                      **Date**  
 XT-PF-E14-MCI-RF-01-0046      01-Aug-13

**Calculation prepared by** Xtratherm Technical Services  
**Source** [www.xtratherm.com](http://www.xtratherm.com)

General Construction Specification	
<b>Wall</b>	
Plasterboard on Dabs	
Medium block inner leaf (0.46)	
Xtratherm XT/CWP T&G	
Brick outer leaf	

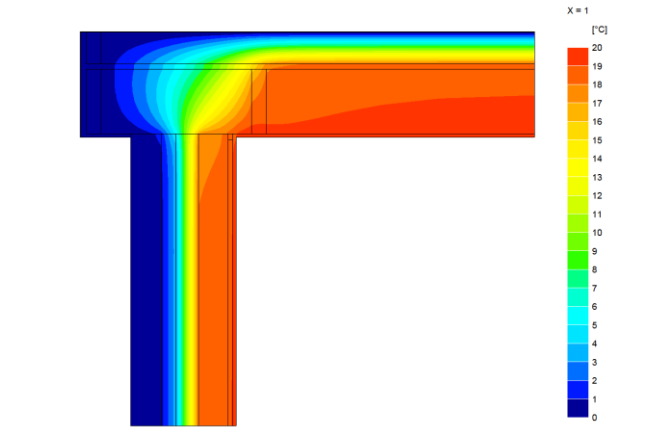
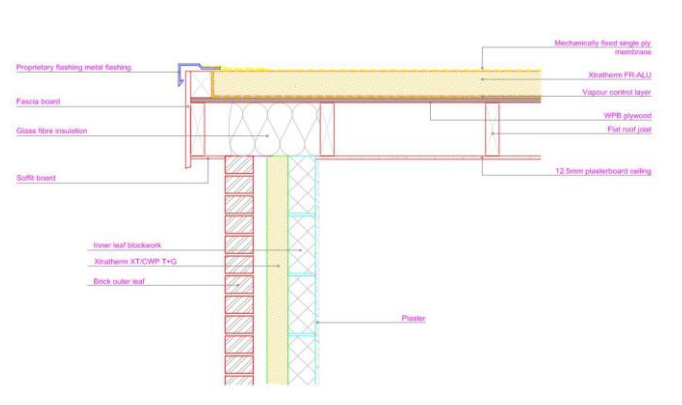
General Construction Specification	
<b>Flat roof</b>	
Membrane	
FR-ALU	
Plywood deck	
Timber joists	
Plasterboard	

**U value Range**  
 Wall 0.16 W/m<sup>2</sup> K to 0.22 W/m<sup>2</sup> K  
 Ceiling 0.18 W/m<sup>2</sup> K

**Description**  
 Flat roof and wall junction

**Reference**  
 MCI-RF-01

## Junction Detail



**Linear Thermal Transmittance W.m.K**

$\Psi =$                       **0.04**

Table K1 (Accredited)  
 0.04

**Temperature Factor (for humidity and mould)**

$f =$                       **0.95**

IP1/06 (Default)  
 0.75

## Notes

Calculations are based on accredited construction detail MCI-RF-01

Notes:

- $\Psi$  and  $f$  are only valid for the detail drawn and described above
- Calculations have been carried out in accordance with the following standards and guidance documents where relevant
- EN ISO 10211 2007

- EN ISO 13370 2007
- EN ISO 6846 2007
- BR 497
- BR 443
- BRE IP1/06

Specification Clauses

Thin-R XT/CWP T&G Partial Fill Cavity-Wall

The partial fill cavity wall insulation shall be Xtratherm Thin-R XT/CWP T&G manufactured to BS EN 13165:2008 by Xtratherm, comprising a CFC/HCFC free rigid Polyisocyanurate (PIR) core between low emissivity foil facings. The XT/CWP T&G \_\_\_mm to achieve a U value of \_\_\_W/m<sup>2</sup>K for the wall element. To be installed in accordance with instructions issued by Xtratherm.

Xtratherm PIR achieves an A+ rating under the BRE Green Guide.  
Refer to NBS clause F30 155, F30 12

**Insulation**

Polyisocyanurate Rigid foam

**Standard**

BS EN 13165:2008

**Certification**

BBA Certification No. 08/4613

Issue date: 5 August 2011

BS EN ISO 9001 Quality Management System

BS EN ISO 14001 Environmental Management System

BS OHSAS 18001 Health and Safety Management System

**Manufacturer UK**

Xtratherm UK Limited, Holmewood Industrial Park,  
Holmewood Chesterfield, Derbyshire, S42 5UY.

Tel: 0371 222 1033. Fax: 0371 222 1044.

Email: [info@xtratherm.com](mailto:info@xtratherm.com) Web: [www.xtratherm.com](http://www.xtratherm.com)

**Product reference**

Thin-R XT/CWP T&G Partial Fill Cavity-Wall

**Face size**

1200 x 450 mm

**Edge profile**

T&G all four edges

**Thickness**

50 mm / 60 mm / 70 mm / 75mm / 80mm / 100mm

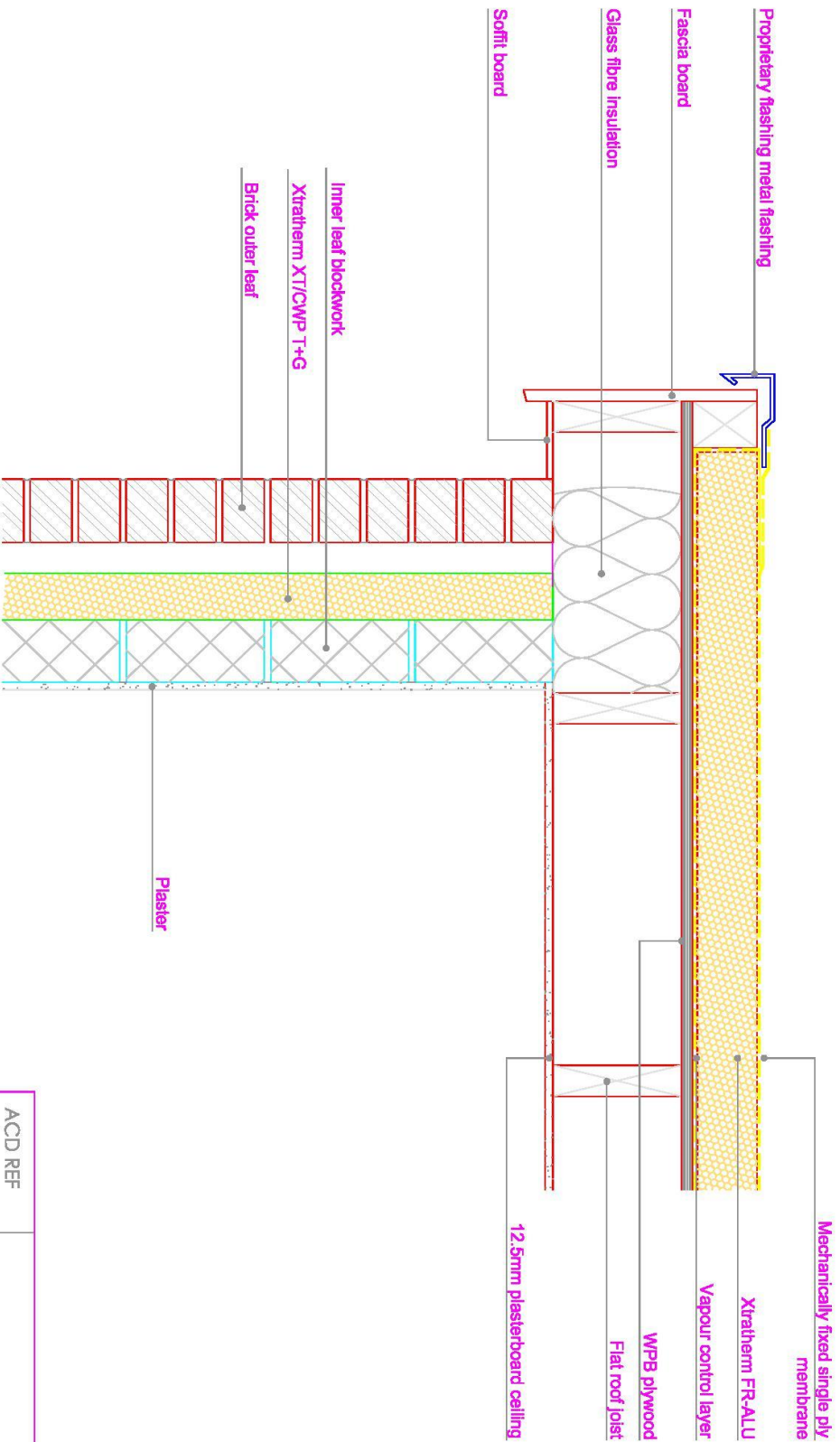
**Manufacturer Ireland**

Xtratherm Limited, Kells Road, Navan,  
County Meath, Ireland.

Tel: 04690 66000. Fax: 04690 66090.

Email: [info@xtratherm.com](mailto:info@xtratherm.com) Web: [www.xtratherm.com](http://www.xtratherm.com)

The above calculations relate to the use of specific Xtratherm materials and specification only, any deviation from performances or jointing methods will effect the result.



Flat roof and wall junction  
 SCALE 1:10

ACD REF	XT-PF-E14-MCI-RF-01
REFERENCE	As noted at A4
SCALE	-
REVISION	-
DATE	JUNE 2013

**Xtratherm®**