

## Technical competency

The PSI value analysis has been undertaken by fully accredited BRE competent persons to EN 10211: 2007 and BR497. Our Xtratherm Technical team are qualified under the BBA calculation competency scheme CS/1006 to produce thermal and condensation calculations.



**Certificate No** XT-PF-E12-MCI-RG-01-0133  
**Date** 01-Aug-13

**Calculation prepared by** Xtratherm Technical Services  
**Source** [www.xtratherm.com](http://www.xtratherm.com)

### General Construction Specification

#### Wall

Plaster

Dense block inner leaf (1.33)

Xtratherm XT/CWP T&G

Brick outer leaf

### General Construction Specification

#### Ceiling

300mm fibreglass

Plasterboard

### U value Range

Wall 0.17 W/m<sup>2</sup> K to 0.21 W/m<sup>2</sup> K

Ceiling 0.15 W/m<sup>2</sup> K

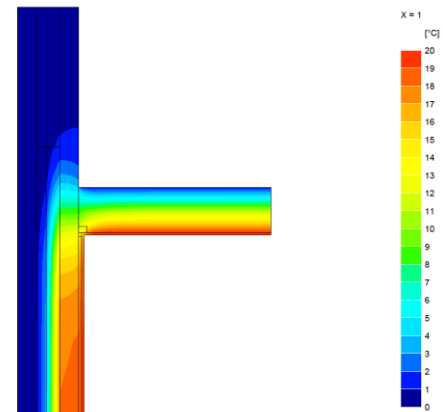
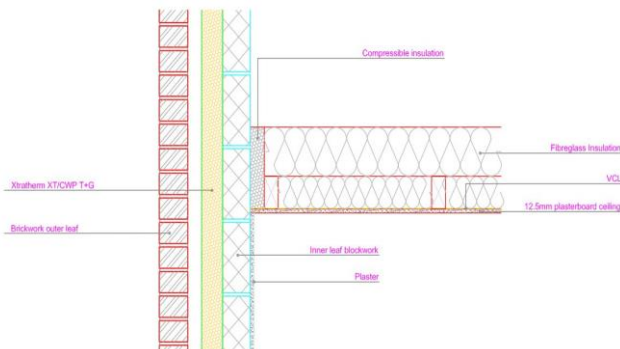
### Junction Detail

### Description

Wall ceiling junction gable (Insulation at ceiling level)

### Reference

MCI-RG-01



### Linear Thermal Transmittance W.m.K

$\Psi =$  **0.22**

Table K1 (Accredited)  
0.24

### Temperature Factor (for humidity and mould)

$f =$  **0.83**

IP1/06 (Default)  
0.75

### Notes

Calculations are based on accredited construction detail MCI-RG-01

Notes:

- $\Psi$  and  $f$  are only valid for the detail drawn and described above
- Calculations have been carried out in accordance with the following standards and guidance documents where relevant
- EN ISO 10211 2007

- EN ISO 13370 2007
- EN ISO 6846 2007
- BR 497
- BR 443
- BRE IP1/06

Xtratherm UK Limited  
Park Road, Holmewood  
Chesterfield, Derbyshire  
S42 5UY

Tel + 44 (0) 371 222 1033  
Fax + 44 (0) 371 222 1044

Xtratherm Limited  
Liscarton Industrial Estate  
Kells Road, Navan  
Co. Meath, Ireland

Tel + 353 (46) 906 6000  
Fax + 353 (46) 906 6090

Contact  
[info@xtratherm.com](mailto:info@xtratherm.com)

[www.xtratherm.com](http://www.xtratherm.com)

Specification Clauses

Thin-R XT/CWP T&G Partial Fill Cavity-Wall

The partial fill cavity wall insulation shall be Xtratherm Thin-R XT/CWP T&G manufactured to BS EN 13165:2008 by Xtratherm, comprising a CFC/HCFC free rigid Polyisocyanurate (PIR) core between low emissivity foil facings. The XT/CWP T&G \_\_ \_mm to achieve a U value of \_\_ \_W/m<sup>2</sup>K for the wall element. To be installed in accordance with instructions issued by Xtratherm.

Xtratherm PIR achieves an A+ rating under the BRE Green Guide.  
Refer to NBS clause F30 155, F30 12

**Insulation**

Polyisocyanurate Rigid foam

**Standard**

BS EN 13165:2008

**Certification**

BBA Certification No. 08/4613

Issue date: 5 August 2011

BS EN ISO 9001 Quality Management System

BS EN ISO 14001 Environmental Management System

BS OHSAS 18001 Health and Safety Management System

**Manufacturer UK**

Xtratherm UK Limited, Holmewood Industrial Park,  
Holmewood Chesterfield, Derbyshire, S42 5UY.

Tel: 0371 222 1033. Fax: 0371 222 1044.

Email: [info@xtratherm.com](mailto:info@xtratherm.com) Web: [www.xtratherm.com](http://www.xtratherm.com)

**Product reference**

Thin-R XT/CWP T&G Partial Fill Cavity-Wall

**Face size**

1200 x 450 mm

**Edge profile**

T&G all four edges

**Thickness**

50 mm / 60 mm / 70 mm / 75mm / 80mm / 100mm

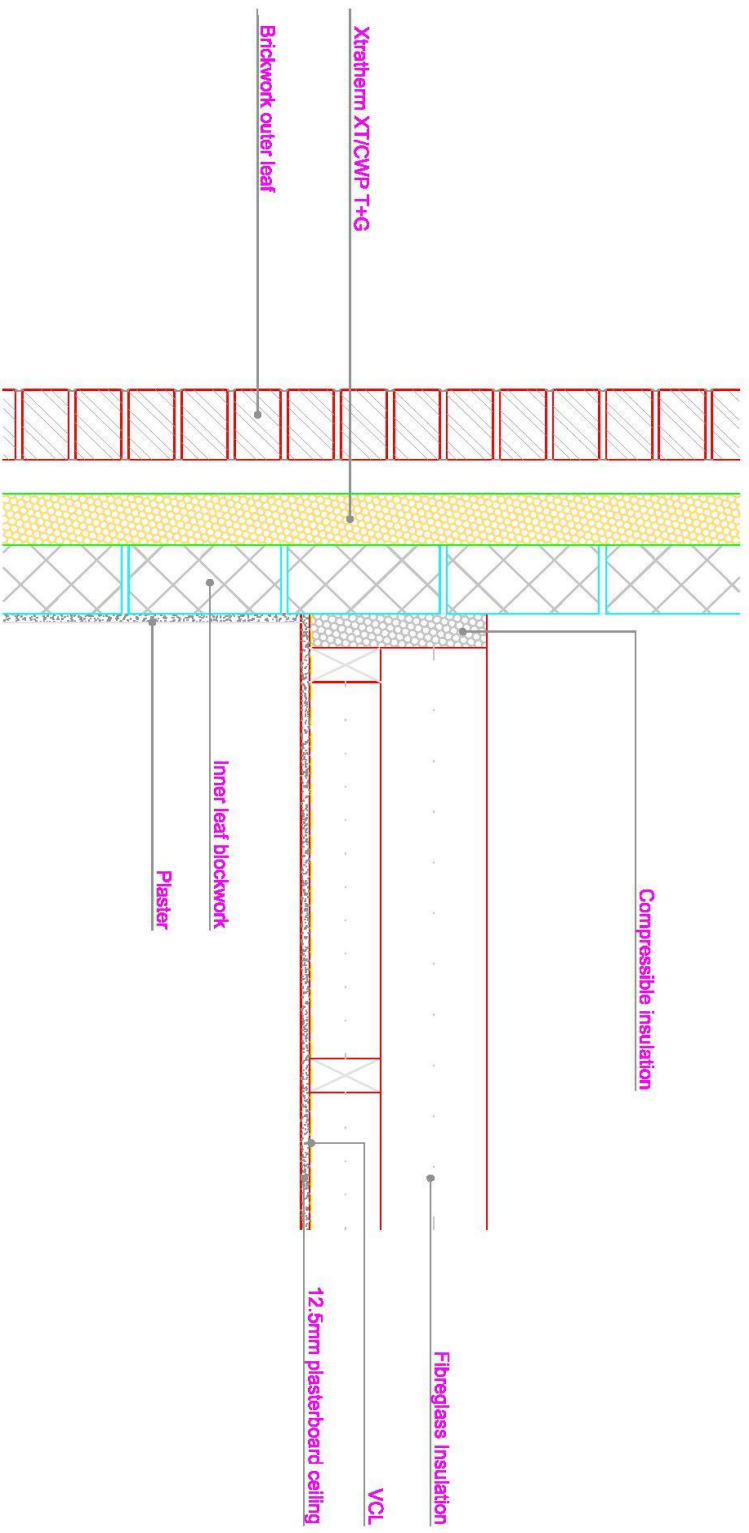
**Manufacturer Ireland**

Xtratherm Limited, Kells Road, Navan,  
County Meath, Ireland.

Tel: 04690 66000. Fax: 04690 66090.

Email: [info@xtratherm.com](mailto:info@xtratherm.com) Web: [www.xtratherm.com](http://www.xtratherm.com)

The above calculations relate to the use of specific Xtratherm materials and specification only, any deviation from performances or jointing methods will effect the result.



Wall ceiling junction - Gable (insulation at ceiling level)  
 SCALE 1:10

ACD REF	XT-PF-E12-MCI-RG-01-0133
REFERENCE	As noted at A4
SCALE	-
REVISION	
DATE	JUNE 2013

**Xtratherm®**