

Technical competency

The PSI value analysis has been undertaken by fully accredited BRE competent persons to EN 10211: 2007 and BR497. Our Xtratherm Technical team are qualified under the BBA calculation competency scheme CS/1006 to produce thermal and condensation calculations.



Certificate No **Date**
 XT-PF-E10-MCI-RE-01-0015 01-Aug-13

Calculation prepared by Xtratherm Technical Services
Source www.xtratherm.com

General Construction Specification

Wall

Plasterboard on Dabs
 Lightweight block inner leaf (0.15)
 Xtratherm XT/CWP T&G
 Brick outer leaf

General Construction Specification

Ceiling

300mm fibreglass
 Plasterboard

U value Range

Wall 0.15 W/m² K to 0.20 W/m² K
 Ceiling 0.15 W/m² K

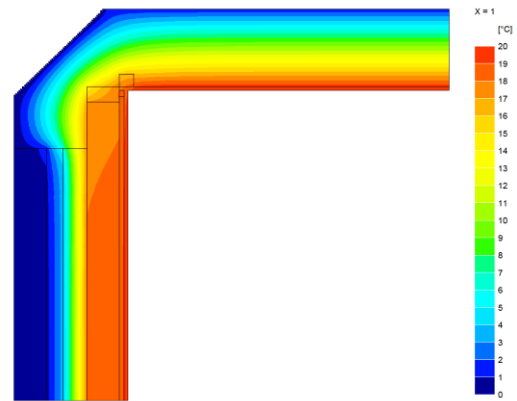
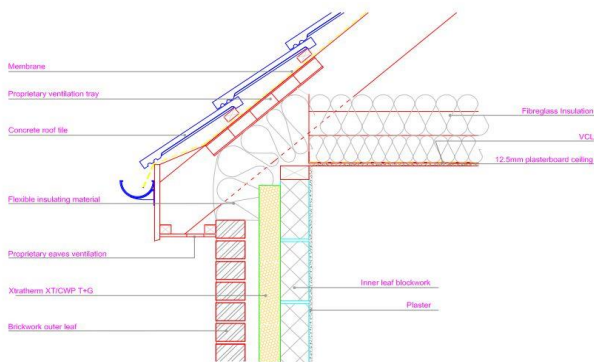
Description

Wall ceiling junction Eaves (Insulation at ceiling level)

Reference

MCI-RE-01

Junction Detail



Linear Thermal Transmittance W.m.K

$\Psi =$ **0.05**

Table K1 (Accredited)

0.06

Temperature Factor (for humidity and mould)

$f =$ **0.93**

IP1/06 (Default)

0.75

Notes

Calculations are based on accredited construction detail MCI-RE-01

Notes:

- Ψ and f are only valid for the detail drawn and described above
- Calculations have been carried out in accordance with the following standards and guidance documents where relevant
- EN ISO 10211 2007

- EN ISO 13370 2007
- EN ISO 6846 2007
- BR 497
- BR 443
- BRE IP1/06

Xtratherm UK Limited
 Park Road, Holmewood
 Chesterfield, Derbyshire
 S42 5UY

Tel + 44 (0) 371 222 1033
 Fax + 44 (0) 371 222 1044

Xtratherm Limited
 Liscarton Industrial Estate
 Kells Road, Navan
 Co. Meath, Ireland

Tel + 353 (46) 906 6000
 Fax + 353 (46) 906 6090

Contact
info@xtratherm.com

www.xtratherm.com

Specification Clauses

Thin-R XT/CWP T&G Partial Fill Cavity-Wall

The partial fill cavity wall insulation shall be Xtratherm Thin-R XT/CWP T&G manufactured to BS EN 13165:2008 by Xtratherm, comprising a CFC/HCFC free rigid Polyisocyanurate (PIR) core between low emissivity foil facings. The XT/CWP T&G __ __ mm to achieve a U value of __ __ W/m²K for the wall element. To be installed in accordance with instructions issued by Xtratherm.

Xtratherm PIR achieves an A+ rating under the BRE Green Guide.
Refer to NBS clause F30 155, F30 12

Insulation

Polyisocyanurate Rigid foam

Standard

BS EN 13165:2008

Certification

BBA Certification No. 08/4613

Issue date: 5 August 2011

BS EN ISO 9001 Quality Management System

BS EN ISO 14001 Environmental Management System

BS OHSAS 18001 Health and Safety Management System

Manufacturer UK

Xtratherm UK Limited, Holmewood Industrial Park,
Holmewood Chesterfield, Derbyshire, S42 5UY.

Tel: 0371 222 1033. Fax: 0371 222 1044.

Email: info@xtratherm.com Web: www.xtratherm.com

Product reference

Thin-R XT/CWP T&G Partial Fill Cavity-Wall

Face size

1200 x 450 mm

Edge profile

T&G all four edges

Thickness

50 mm / 60 mm / 70 mm / 75mm / 80mm / 100mm

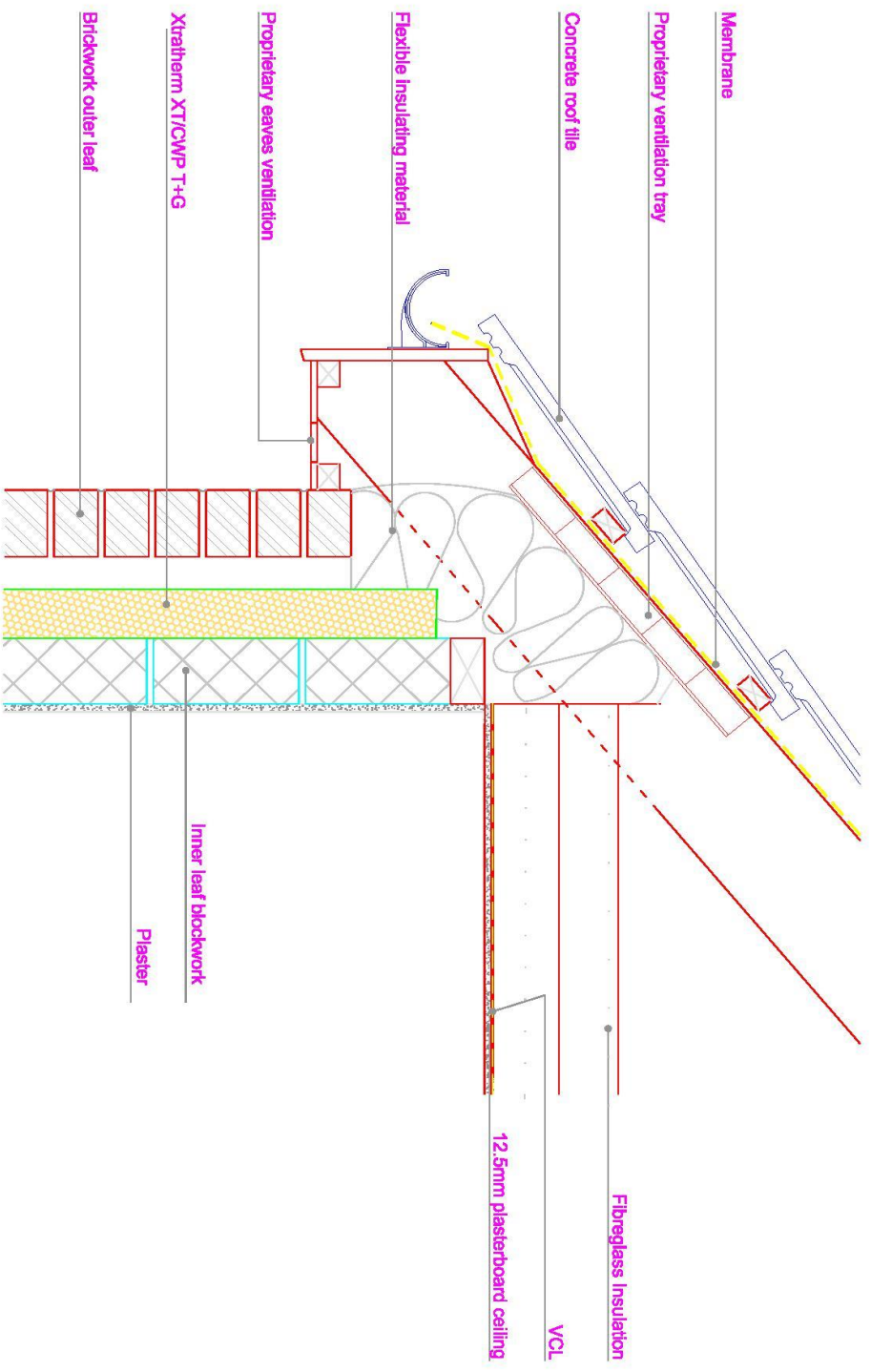
Manufacturer Ireland

Xtratherm Limited, Kells Road, Navan,
County Meath, Ireland.

Tel: 04690 66000. Fax: 04690 66090.

Email: info@xtratherm.com Web: www.xtratherm.com

The above calculations relate to the use of specific Xtratherm materials and specification only, any deviation from performances or jointing methods will effect the result.



Wall ceiling junction - Eaves (insulation at ceiling level)
 SCALE 1:10

ACD REF	XT-PF-E10-MCI-RE-01
REFERENCE	As noted at A4
SCALE	-
REVISION	-
DATE	JUNE 2013

Xtratherm[®]