

More than insulation

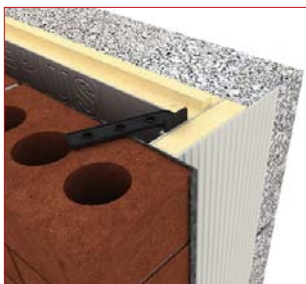
ISSUE 1 2009

Xtratherm[®]

High performance proprietary reveal insulation

Close-R Insulated Cavity Closer

Cost effective thermal solutions





Xtratherm Close-R

Xtratherm Close-R fully insulated cavity closers are a cost effective solution for builders and specifiers for the closing of cavities around window and door openings, preventing cold bridging, damp penetration, air infiltration and condensation. The Close-R range is used to close cavities and is suited to all types of windows and doors and is available in sizes to fit cavity widths from 100mm - 150mm, with checked detail to suit brick or drylined specifications and flanged detail to suit block outer facings. (Flanged detailing requires precise construction tolerances.)

- Saves Time.
- Cost effective.
- No cut return/Nib block required.
- Suits 100 - 150mm cavities.
- Meets new Part L requirements.
- Available from Builder Merchants.

Building Regulations

The recently revised Part L of Irish Building Regulations places great emphasis on detailing at junctions. It has recognized the need to improve traditional junction performance as wall U-values improve.

Targets for junction thermal performance are set in the BRE Paper IP1/06 and asks that a value of 0.05 be achieved. In the past where a typical wall U-value was between 0.37 and 0.27, the 0.05 target was easily achieved using the traditional 25mm strip at the reveal. However when pushing the wall U-values to 'A or B' rated values the junctions actually fail IP1/06.

Xtratherm Close-R has been independently tested to exceed the new standards.

Installation

If precise fitting of windows can not be guaranteed, a checked reveal using a vertical DPC should be used.

Any jointing of Close-R should be facilitated within 150mm of the opening head.

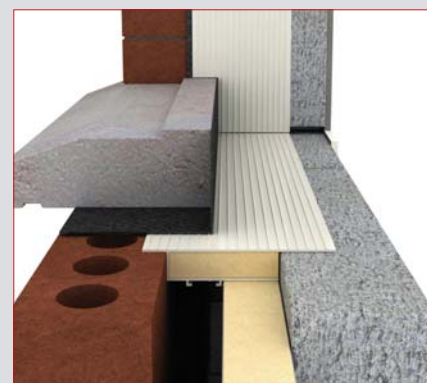
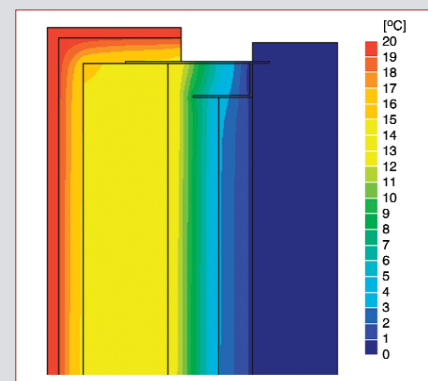
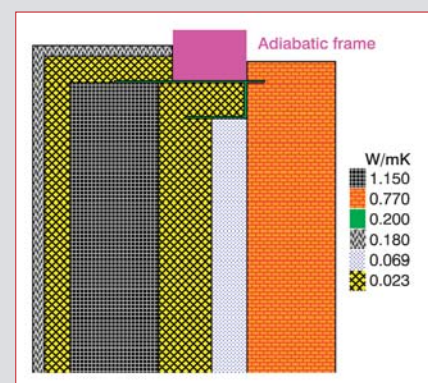
Close-R should be extending by 50mm past the sill closer.

When sills are horned into the facing outer leaf, the reveal Close-R should be trimmed around the concrete sill and extend 50mm into the cavity.

Horizontal DPCs should be used with the sill as normal, with a lining of 40mm Polyiso placed at the back of the concrete sill.

Should clarification be required, contact Xtratherm Technical Support prior to installation.

Thermographic measurement - Best Practice with liner



Wall U-value	XT/CW	Thermal Liner	IP1/06 Psi Target	Measured Psi-value
0.27	60mm	-	0.05	0.006
0.22	80mm	-	0.05	0.008
0.18	100mm	-	0.05	0.010
0.18	60mm	30mm	0.05	0.004

It has been estimated that up to 30% of the heatloss in a well insulated house is through 'Non Repeating Thermal Bridges' at wall/floor junctions, corners, reveals, ceiling junctions heads and sills.

Appropriate detailing to ensure the 'Continuity of insulation' is now asked for by Part L, and this continuity can be satisfied by following details printed by the DOE in their publication 'Acceptable Details of Construction.' Using these details will allow the BER assessor to ascribe a good score to the detailing section within DEAP with a Y-value of 0.08, following the Enhanced Details using the Close-R system with insulated drylining may allow a Y-value of 0.04 to be used - a substantial improvement.

Xtratherm® Close-R

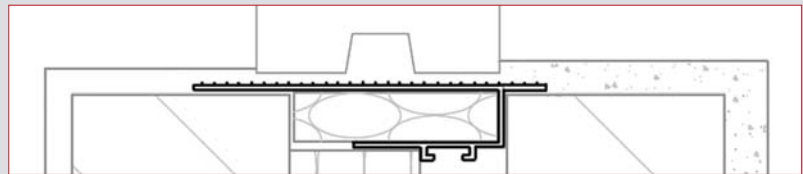
Flanged fit - Concrete Outer

(This methods requires precise construction to facilitate accurate window fitting against Close-R)



With optional Uni-tie.

Code	Length	Cavity Width	XT/CW Thickness	No. Per Pack
CLF3025100	3000	100	Max 60	6
CLF3025120	3000	120	Max 80	6
CLF3025140	3000	140	Max 100	6
CLF3025150	3000	150	Max 110	6



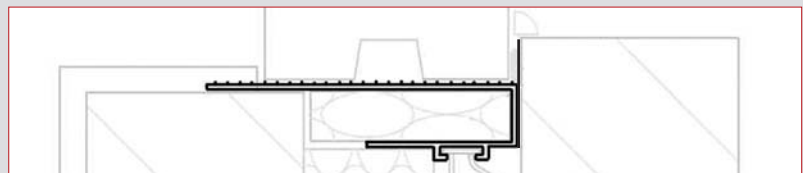
The ribbed surface of Close-R will accept wet plaster or plasterboard on dabs. Best practice would suggest priming the Close-R surface prior to finishing.

Checked fit - Brick Outer



With Uni-tie.

Code	Length	Cavity Width	XT/CW Thickness	No. Per Pack
CLC3025100	3000	100	Max 60	6
CLC3025120	3000	120	Max 80	6
CLC3025140	3000	140	Max 100	6
CLC3025150	3000	150	Max 110	6



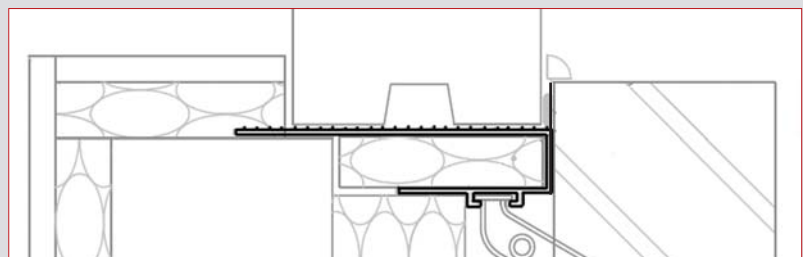
With checked detail a vertical DPC should be used as best practice.

Checked fit - Plus Thermal Liner (Enhanced Accredited Detail)



With Uni-tie.

Code	Length	Cavity Width	XT/CW Thickness	No. Per Pack
CLC3025100	3000	100	Max 60	6



With checked detail a vertical DPC should be used as best practice.

Close-R Uni-ties



Code	Cavity Width	XT/CW Thickness	No. Per Pack
CL-UNITIE	100 -140mm	60 -100mm	100

The Xtratherm range of engineered components builds to provide the complete solution to ensure continuity of the insulated envelope, delivering unrivaled thermal bridging detailing and enhanced DEAP performance.

Partial Fill Cavity Wall



XT/CW T&G

- T&G Jointed
- Lambda value 0.023 W/mK
- Low E Foil Facings
- Corner boards available
- Complies with enhanced details
- Fully IAB accredited.

Cavity Plus Enhanced Cavity Wall



XT/CWP T&G

- T&G Jointed
- Enhanced Lambda value 0.021 W/mK
- Low E Foil Facings
- Corner boards available
- Complies with enhanced details
- Fully IAB accredited.

Corner Panels



XT/CRN

- Pre-formed corner panels
- Guaranteed thermal join at corner.
- Allows for staggered jointing.
- Left and right hand supplied.
- Low E Foil Facings
- Complies with enhanced details
- Fully IAB accredited.

Thermal Liner



XT/TL & TL (MF)

- Insulation and plasterboard laminate
- Provides additional U-value performance.
- Provides Enhanced Detailing at junctions.
- Fully IAB accredited.

Technical Support

The Xtratherm Technical Support team provide a single point of contact to offer assistance on a wide range of issues for both the Designer and Builder and can be contacted by phone, fax or e-mail. Full details of all Xtratherm products, along with full technical literature can be downloaded from the web site at:

www.xtratherm.com

Xtratherm®

Xtratherm Limited
Kells Road, Navan
County Meath, Ireland
Tel: +353 (0) 46 90 66000
Fax: +353 (0) 46 90 66090